

# IBC CAPPING STATION

## General

The IBC Capping Station is part of the unique Matcontainer range of equipment designed to automatically cap and uncapped Matcon's range of Intermediate Bulk Containers (IBCs).

## Why use Caps ?

Caps are typically fitted to the outlet of IBCs if they are to be transported or stored outside of the regular production areas. They have two primary functions. Firstly the Cap clamps the Cone Valve inside the IBC to prevent any possibility of it becoming dislodged during transportation. Secondly the Cap covers the outlet area and keeps it free from contamination (dust, insects...) to which it may become exposed..

## Capping

The Station uses vacuum to pull the Cap onto the outlet of the IBC and the Cone Valve. It is retained there by a locking rubber seal, which mechanically binds the cap to the Cone Valve, sandwiching the IBC outlet between the two. Note that vacuum is not required to hold the Cap in position. The Station again uses vacuum to remove the cap from the outlet of the IBC. For both capping and uncapping operations the forces applied to the Cone Valve are vertically downwards, having the effect of clamping it tighter in the IBC outlet.

## Contained/Tamper Evident

When used as part of an overall containment strategy the Capping System is an important, validateable element in providing high containment assurance. The Cap is very solidly applied to the outlet and can only be applied or removed by use of the Capping Station. It is possible that the Cap could be taken off with extreme force, however in such situation it cannot be replaced without a Station and it would therefore be evident that the IBC had been tampered with.

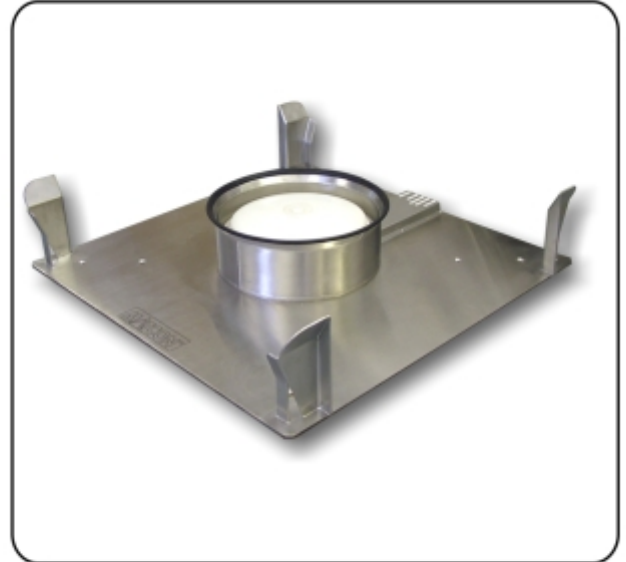
## Blending Applications

An IBC fitted with the automatic Cap may be placed directly into an IBC Blender – without removing the Cap. Once the IBC is clamped in the Blender a vacuum is re-applied to the Cap, ensuring that the Cone Valve cannot be lost during the blending process.

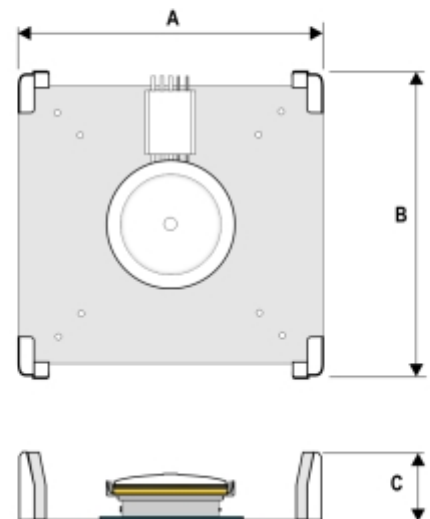
## Options

As standard the IBC Capping Station is manufactured in Stainless Steel. The following options are available.

- Mild Steel Plate



1. Before Capping    2. Cone leveled and Capped    3. IBC removed



dimension	A	B $\phi$	C
mm	1251	1242	282
inches	49.3	50	11